

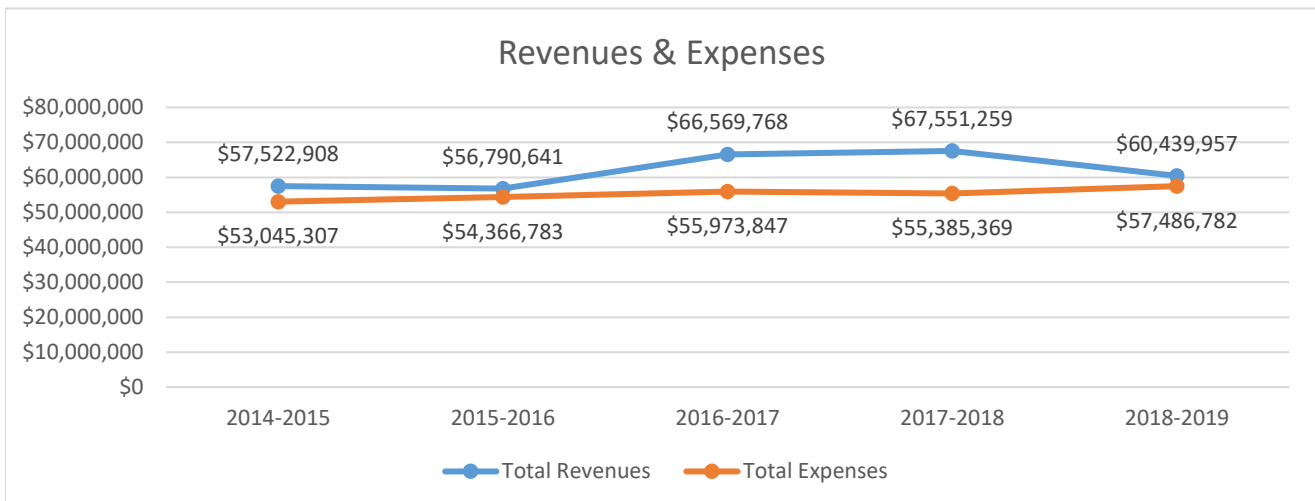
Lebanon Valley College

Revenues and Expenses Five Fiscal Years

	2014-2015	2015-2016	2016-2017	2017-2018	2018-2019
Revenues					
Educational & General					
Net Tuition and Fees	\$34,377,306	\$34,592,992	\$33,789,412	\$33,403,294	\$34,016,927
Government Grants	\$2,677,738	\$2,809,593	\$2,641,702	\$2,840,339	\$2,840,633
Gifts & Private Grants	\$5,191,047	\$6,623,628	\$8,371,466	\$11,415,394	\$5,819,014
Endowment/Investment Income	\$745,596	\$719,803	\$734,390	\$1,135,736	1478631
Auxiliary Enterprises	\$13,273,843	\$14,084,825	\$14,486,622	\$15,016,468	\$15,386,419
Gain on sale of property	--	--	--	--	--
Interest on Loans	\$12,102	\$10,628	\$9,094	\$16,736	
(Losses) Gains on Investments, net	\$1,245,276	-\$2,050,828	\$6,537,082	\$3,723,292	\$898,333
Total Revenues	\$57,522,908	\$56,790,641	\$66,569,768	\$67,551,259	\$60,439,957

Expenses					
Educational & General					
Instruction	\$14,915,449	\$15,814,277	\$17,090,392	\$17,003,805	
Academic Support	\$3,581,518	\$3,807,620	\$3,616,807	\$3,161,433	
Student Services	\$7,403,815	\$7,280,222	\$7,409,513	\$7,149,742	
Public Services	\$524,581	\$486,439	\$578,846	\$404,922	
Operations & Maintenance of Plant	\$3,947,479	\$4,032,905	\$3,927,370	\$3,635,470	
General Institution	\$7,931,598	\$8,358,068	\$8,447,602	\$9,509,922	
Student Aid (government)	\$1,799,054	\$1,821,103	\$1,801,400	\$1,957,030	
Auxiliary Enterprises	\$6,507,815	\$6,490,348	\$6,435,154	\$6,316,970	
Interest on Indebtedness	\$867,008	\$697,971	\$824,775	\$433,760	
Depreciation expense	\$5,566,990	\$5,577,830	\$5,841,988	\$5,812,315	
Total Expenses	\$53,045,307	\$54,366,783	\$55,973,847	\$55,385,369	\$57,486,782

Net Assets					
Change in Net Assests	\$4,477,601	\$2,423,858	\$10,595,921	\$12,165,890	\$2,953,175
Net Assets Beginning of Year	\$126,702,933	\$131,180,534	\$133,604,392	\$144,200,313	\$156,366,203
Net Assets End of Year	\$131,180,534	\$133,604,392	\$144,200,313	\$156,366,203	\$159,319,378



Source: Audited Financial Statements

